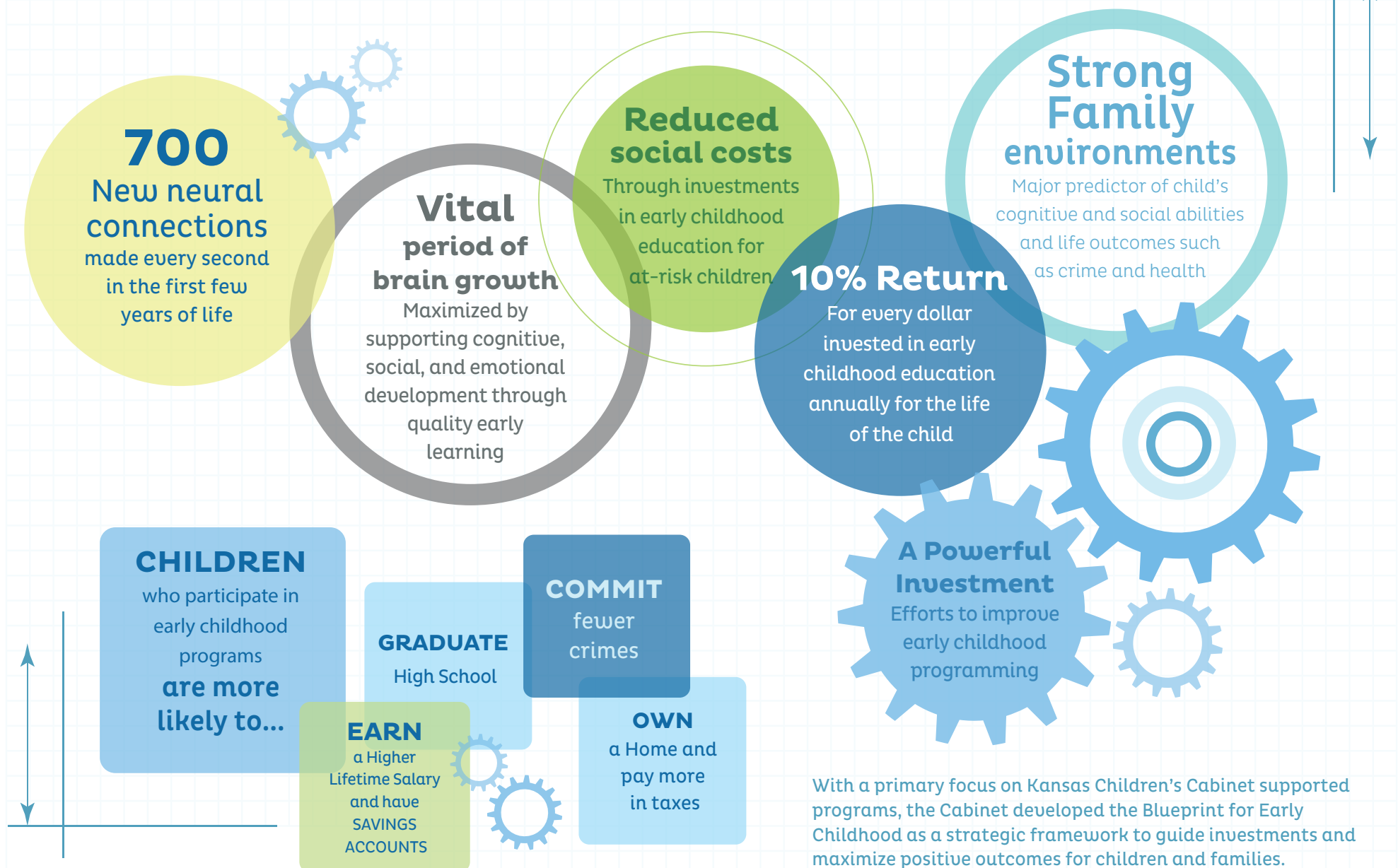


Investing in the Future of Kansas

Healthy Development, Strong Families, Early Learning



Sources: Center on the Developing Child (Harvard University), Partnership for America's Economic Success, Pew Center on the States, The Heckman Equation, ReadyNation

What is the Blueprint for Early Childhood?

Building a Strong Foundation for Children and Families

An expression of the Kansas Children's Cabinet and Trust Fund's vision for early childhood in Kansas, the Blueprint for Early Childhood ("Blueprint") is a strategic framework to optimize child and family well-being. The Blueprint will be used to align the Cabinet's investment portfolio and monitor progress toward goals.



"Often the most powerful change comes from the community level and develops from the alignment of stakeholders working together in a coordinated way."

- Amanda Adkins, Kansas Children's Cabinet and Trust Fund Chair



Implementation

Built on past systems' work, the Blueprint is a forward-looking guide for expanding an effective early childhood system of services and supports for young children and their families.

Areas of Impact

The Cabinet identified Areas of Impact within each of the Building Blocks – Healthy Development, Strong Families, and Early Learning that aim to unite past and current collaborative work products.

Current Measures

The Cabinet is committed to a system of shared measurement and strong accountability to tell the story of early childhood investments in Kansas. Common measures are the tools currently being used to measure short-term and intermediate outcomes in Early Childhood Block Grant (ECBG) and Community-based Child Abuse and Neglect Prevention (CBCAP) programs.

Community Collaboration

Moving the needle on Healthy Development, Strong Families, and Early Learning will require creative community collaboration across sectors, involving multiple partners working toward a shared vision of high quality, accessible, affordable programs for young children and families.

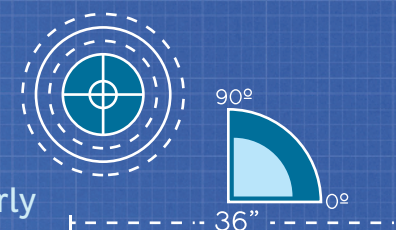
What Do Healthy Development, Strong Families, and Early Learning Look Like?

While the path to achieve success may vary, the Cabinet's vision of success is intended to serve as a guide for innovative program design, partnership development, implementation and tracking toward long-term outcomes for children and families.

Blueprint for Early Childhood

Building a Strong Foundation for Children and Families

The **Kansas Children's Cabinet and Trust Fund** recognizes early childhood as a critical period of intervention that establishes a child's foundation for school and life success. We are therefore committed to nurturing a culture of public-private partnerships in early childhood programming where diversity of thought is an asset and past work is valued.



Goals

public-private
Partnerships

Community Collaboration
shared vision

Healthy Development

PRIMARY CARE

SOCIAL-EMOTIONAL DEVELOPMENT

EARLY IDENTIFICATION

Child

AREAS OF IMPACT

Ensure outreach, education, and ongoing support for pregnant women (particularly underserved populations)

Promote early and comprehensive prenatal care

Increase identification, access/availability and quality of services

Increase insurance coverage for pregnant women and children

Support all children in having a medical home

Promote access to oral health and vision care

Integrate and screen universally for healthy development

Improve access to mental health services through partnerships

Promote inclusion of children with disabilities into natural environments

Promote public-private partnerships

Strong Families

PARENT SUPPORT

SAFE, STABLE AND NURTURING
RELATIONSHIPS (SSNRs)

COMMUNITY ENGAGEMENT

Family

AREAS OF IMPACT

Support parent involvement and leadership

Promote safe, stable, and nurturing relationships to ensure children have strong, healthy starts

Promote cross-sector partnerships to support comprehensive needs of families

Engage non-traditional stakeholders

Promote, evaluate, and enhance evidence-based family support programs

Promote the facilitation of peer-to-peer support opportunities

Promote opportunities for families to earn a living wage

Promote public-private partnerships

Early Learning

CHILD CARE

PRE-K

EARLY LITERACY

Educational
Environment

AREAS OF IMPACT

Promote community-based, school-based, and faith-based early learning experiences

Support economic development of child care businesses

Ensure high-quality care for all children by promoting adequate funding for core services

Ensure high-quality care for all children by supporting the implementation of a statewide quality rating and improvement system

Promote effective transitions into school for at-risk populations, including voluntary, full-day kindergarten

Support inclusive and culturally sensitive training for early childhood professionals based on established core competencies

Support the use of early learning standards to increase consistency and quality of services

Promote public-private partnerships

As a baseline for this Blueprint, collaborative work products in which the Cabinet has participated, such as the Kansas Early Childhood Comprehensive System Plan, the Kansas School Readiness Framework, and the Kansas Strengthening Families Plan, have been used. Existing plans such as the Governor's Roadmap for Kansas, the Maternal and Child Health Strategic Plan (KDHE), the Child Care and Development Fund State Plan (DCF), and the Kansas Head Start State Collaboration Office Priority Areas (DCF) will also continually inform the Blueprint to support collective impact.



Healthy Development

WHAT DOES HEALTHY DEVELOPMENT LOOK LIKE?

Child

Pregnant women have access to prenatal care

Infants are born at adequate birthweight

Mothers breastfeed at least 6 months

Children are current with immunizations

Children reach developmentally appropriate milestones

Early childhood professionals have specialized early childhood mental health training

COMMON MEASURES*

Ages and Stages Questionnaire (ASQ) – 3

ASQ: Social-Emotional

Devereaux Early Childhood Assessment (DECA) I, (DECA) T, (DECA) P2

Individual Growth & Development Indicators (IGDI), myIGDI

*Common measures currently used by Cabinet-funded ECBG and CBCAP programs

COMMUNITY COLLABORATION

Businesses	Foundations
Child Care	Local Health Depts
Community Orgs	Medicaid
Faith-Based Orgs	Mental Health Centers
Families	State Agencies
Family Supports	Other

Strong Families

WHAT DO STRONG FAMILIES LOOK LIKE?

Family

Fewer children live in poverty

Families can afford child care

More children are born to mothers with a high school diploma or more

Family support programs are able to meet the demand for services

No children experience abuse or neglect

COMMON MEASURES*

HOME Inventory – Infant/Toddler

HOME Inventory – Early Childhood

Keys to Interactive Parenting Scale (KIPS)

Protective Factors Survey (PFS)

*Common measures currently used by Cabinet-funded ECBG and CBCAP programs

COMMUNITY COLLABORATION

Businesses	State Agencies
Community Orgs	Universities
Faith-Based Orgs	Other
Families	
Family Supports	
Foundations	

Early Learning

WHAT DOES EARLY LEARNING LOOK LIKE?

Educational Environment

Child care facilities & homes are able to meet the demand for services

Early learning programs are able to meet the demand for services

Programs are compliant with licensing regulations

Early learning programs are high quality

Early childhood professionals are competent, credentialed, and effective

COMMON MEASURES*

Devereaux Early Childhood Assessment (DECA) I, (DECA) T, (DECA) P2

Classroom Assessment Scoring System (CLASS) – Toddler

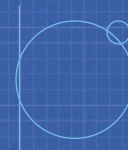
CLASS Pre K

Individual Growth & Development Indicators (IGDI), myIGDI

*Common measures currently used by Cabinet-funded ECBG and CBCAP programs

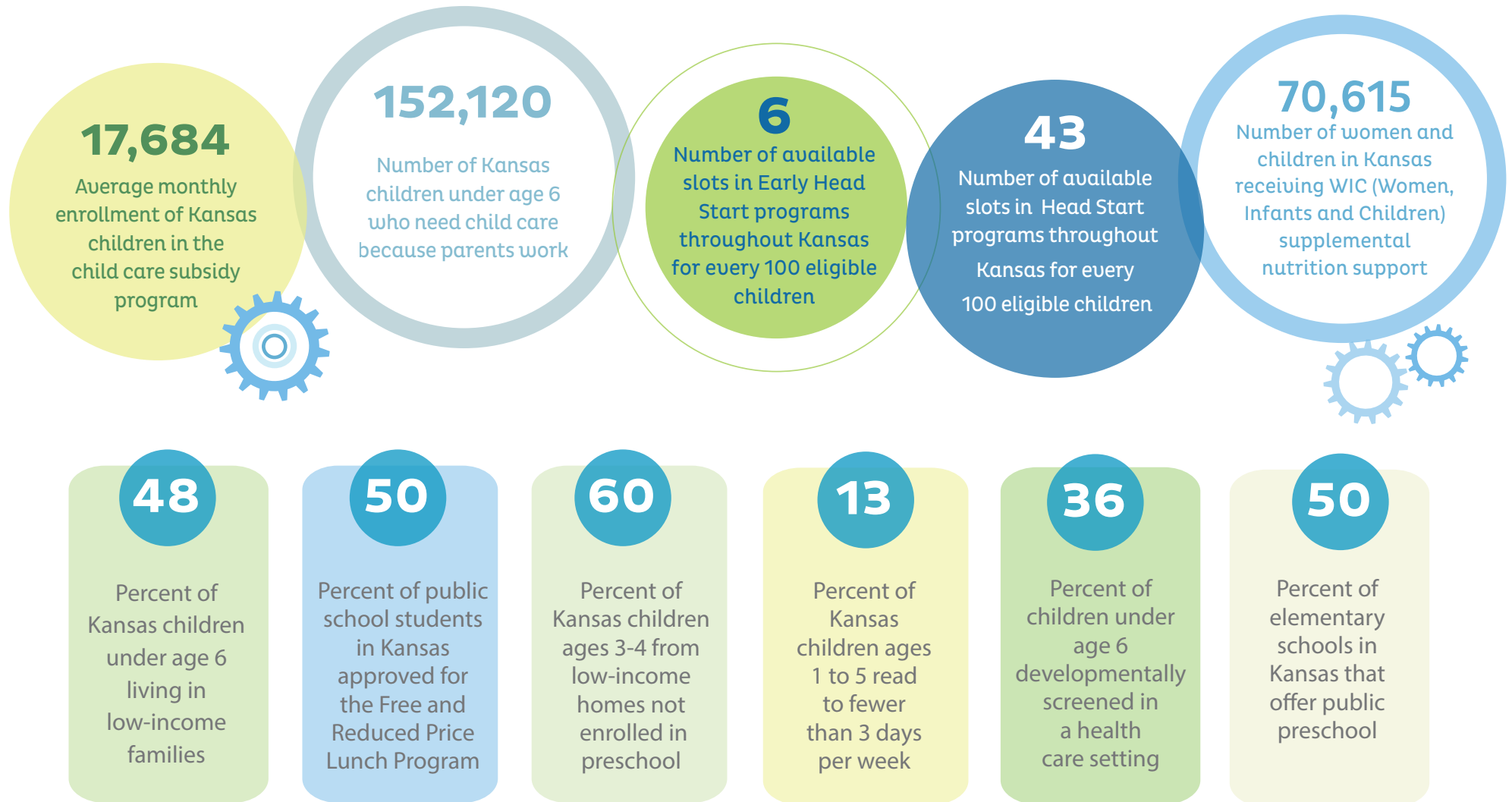
COMMUNITY COLLABORATION

Businesses	Foundations
Child Care	Health Professionals
Community Orgs	Libraries
Faith-Based Orgs	Pre-K Programs
Families	State Agencies
Family Supports	Other



Why Does Kansas Need Investments in Early Childhood?

Building a Strong Foundation for Children and Families

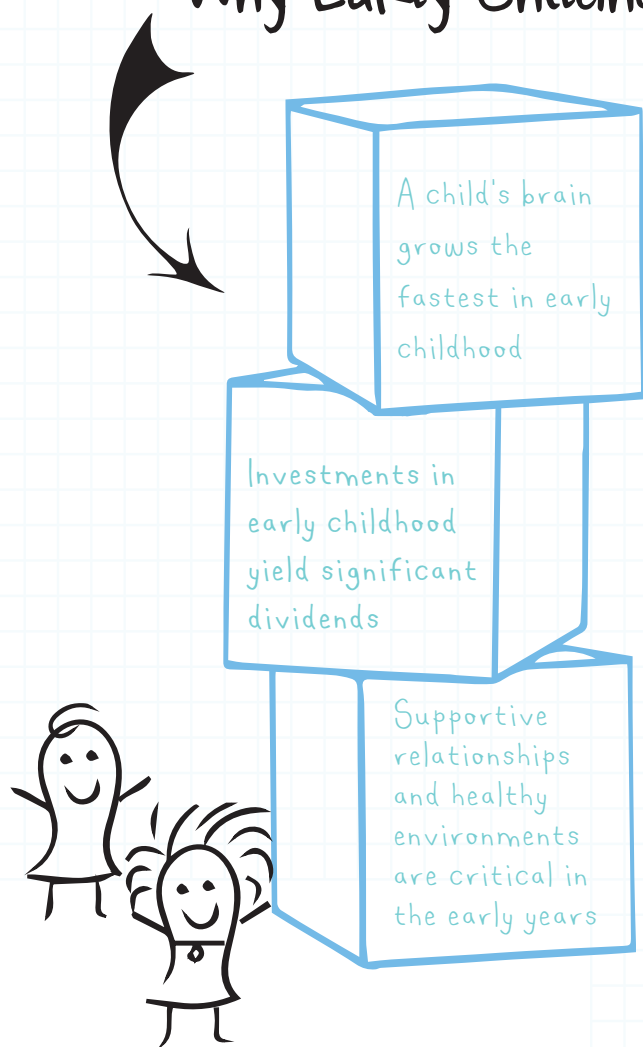


Sources: Child Care Aware of Kansas, Kids Count Data Center, The Heckman Equation, U.S. Department of Labor, U.S. Department of Agriculture

Blueprint for Early Childhood

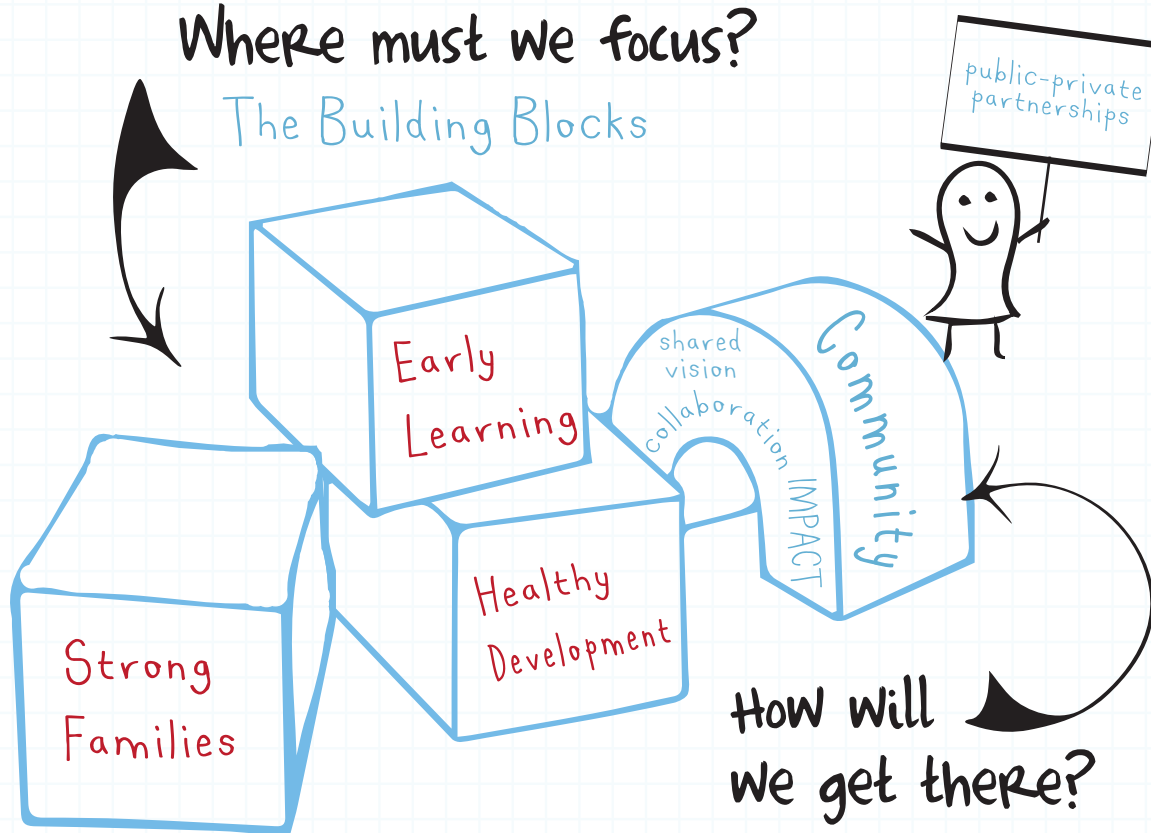
Building a Strong Foundation for Children and Families

Why Early Childhood?



Where must we focus?

The Building Blocks



How will we get there?